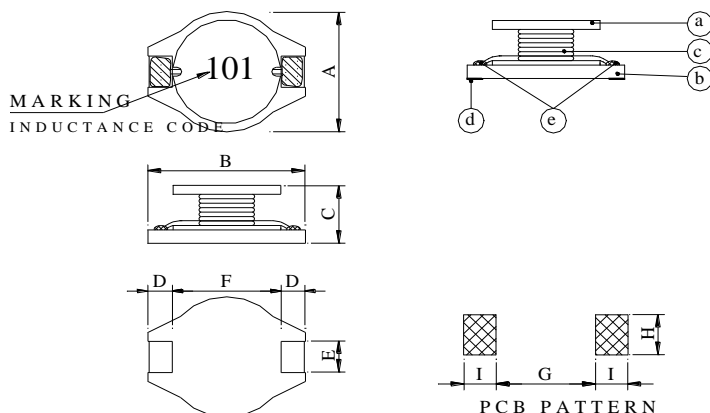




GENERAL COMPONENTS INDUSTRY CORP.

旭誠工業股份有限公司

GDB SERIES I CONFIGURATION & DIMENSIONS :



SERIES	A	B	C	D	E	F	G	H	I
GDB0805	8.0±0.2	10.5±0.2	5.0±0.3	2.1±0.2	2.0±0.2	6.0±0.3	5.7 ^{REF}	2.2 ^{REF}	2.4 ^{REF}
GDB1003	10.0±0.2	12.7±0.2	3.0±0.3	2.4±0.2	2.2±0.2	7.6±0.3	7.3 ^{REF}	2.8 ^{REF}	3.0 ^{REF}
GDB1005	10.0±0.2	12.7±0.2	5.0±0.3	2.4±0.2	2.2±0.2	7.6±0.3	7.3 ^{REF}	2.8 ^{REF}	3.0 ^{REF}
GDB1011	10.0±0.2	12.7±0.2	11.0±0.5	2.4±0.2	2.2±0.2	7.6±0.3	7.3 ^{REF}	2.8 ^{REF}	3.0 ^{REF}
GDB1507	15.0±0.3	18.4±0.3	7.0±0.5	2.4±0.2	2.2±0.2	13.3±0.3	12.7 ^{REF}	2.8 ^{REF}	3.0 ^{REF}
GDB1511	15.0±0.3	18.4±0.3	11.5 ^{MAX}	2.4±0.2	2.2±0.2	13.3±0.3	12.7 ^{REF}	2.8 ^{REF}	3.0 ^{REF}

UNIT : m/m

★ MATERIALS :

- a · CORE : FERRITE DR CORE
- b · BASE : LCP E4008
- c · WIRE : ENAMELLED COPPER WIRE
- d · TERMINAL : TINNED COPPER PLATE
- e · ADHESIVE : EPOXY RESIN

★ GENERAL SPECIFICATION :

- a · TEMP. RISE : 40°C (GDB0805,1005,1011 : MAX. , GDB1507 : TYP.)
40°C TYP. AT I_{rms} (GDB1511)
30°C (GDB1003 : MAX.)
- b · RATED CURRENT : BASE ON TEMP. RISE & ΔL/L0A=10%
MAX.(GDB0805,1003,1011)
MP. RISE & ΔL/L0A=10% TYP.(GDB1005)
BASE ON TEMP. RISE & ΔL/L0A=10% TYP. AT Isat (GDB1511)
① BASE ON TEMP. RISE(GDB1507)
② ΔL/L0A=10% MAX.(GDB1507)
- c · STORAGE TEMP. : -40°C ----+125°C
- d · OPERATING TEMP. : -40°C ----+85°C
- e · RESISTANCE TO SOLDER HEAT : 260°C.10 SECS.
- f · INDUCTANCE AND Q MEASURING FREQUENCY : 100KHZ , 1V



GENERAL COMPONENTS INDUSTRY CORP.

旭 誠 工 業 股 份 有 限 公 司

GDB SERIES I

ITEM	RDC (mΩ)						IDC (A)						Q				SRF (MHZ)						Isat	Irms	
	MAX.						MAX.						REF.				TYP.						(A)	(A)	
	GDB0805	GDB1003	GDB1005	GDB1011	GDB1507	GDB1511	GDB0805	GDB1003	GDB1005	GDB1011	GDB1507	GDB0805	GDB1003	GDB1011	GDB1507	GDB0805	GDB1003	GDB1005	GDB1011	GDB1507	GDB1511	GDB1511			
1R0			9		9				6.8		8.60		50		50			150.0		140.0					
1R5			10		12				6.4		7.50		50		50			100.0		110.0					
2R2			12		14				6.1		7.10		45		50			85.0		75.0					
3R3	30		15		18		3.70		5.4		6.20	40	35		60	50.0		60.0		70.0					
4R7	35		18				3.30		4.8			30	35			40.0		45.0							
5R6					20						5.30				50					45.0					
6R8	50		27				2.70		4.4			30	35			30.0		35.0							
100	60	110	38	40	31		2.30	2.00	3.9	3.50	4.30	25	30	30	30	23.0	35.0	25.0	23.0	21.0					
150	80	150	46	50	36		2.10	1.50	3.1	3.20	4.00	25	30	30	30	20.0	33.0	20.0	14.0	16.0					
220	130	230	85	66	47		1.60	1.30	2.7	2.90	3.50	25	25	40	20	16.0	25.0	18.0	8.5	13.0					
330	180	300	100	80	66		1.30	1.10	2.1	2.35	3.00	25	30	40	30	12.0	19.0	14.0	7.0	11.0					
470	260	390	140	110	86	55.0	1.10	0.80	1.8	2.10	2.60	45	20	35	20	11.0	14.0	11.0	6.5	9.0	5.20	3.70			
680	350	660	200	170	130	75.0	1.10	0.70	1.5	1.90	2.30	35	35	35	30	9.0	12.0	10.0	4.5	6.5	4.30	3.10			
101	580	840	280	220	190	125.0	0.70	0.60	1.3	1.55	1.80	55	40	30	20	7.0	10.0	7.0	4.0	5.7	3.60	2.50			
151	750	1200	400	340	250	190.0	0.60	0.50	1.0	1.35	1.50	50	40	30	25	5.0	8.0	6.5	3.0	4.5	3.00	2.00			
221	1050	1900	610	440	380	280.0	0.50	0.40	0.8	1.00	1.20	55	40	50	25	4.0	6.0	5.0	2.5	3.7	2.50	1.60			
331	1600	2700	1020	700	560	370.0	0.45	0.30	0.6	0.90	1.00	50	60	50	30	3.5	5.0	4.0	2.3	3.0	2.00	1.40			
471		4000	1270	950	850	510.0		0.20	0.5	0.75	0.82		50	45	30		4.0	3.0	2.0	2.7	1.60	1.20			
681		5300	2020	1200	1100	800.0		0.10	0.4	0.55	0.72		65	50	35		3.0	2.5	1.5	2.2	1.40	1.00			
102		8400	3000	2000	1800	1100.0		0.05	0.3	0.50	0.56		60	50	35		2.5	2.0	1.3	2.0	1.15	0.80			
152						1600.0																0.95	0.60		
222						2300.0																0.80	0.50		
332						3600.0																0.65	0.40		
472						5200.0																0.55	0.35		
682						7700.0																0.45	0.30		
103						11000.0																0.38	0.25		

INDUCTANCE TOLERANCE: GDB0805 3R3~331:M:±20%
 GDB1003 100~102:M:±20%
 GDB1005 1R0~102:M:±20%
 GDB1011 100~102:M:±20%
 GDB1507 1R0~102:M:±20%
 GDB1511 470~103:M:±20%