



GENERAL COMPONENTS INDUSTRY CORP.

旭誠工業股份有限公司

GDH SERIES II

★ CONFIGURATION & DIMENSIONS :

Fig : A (GDH0605 , GDH1006)

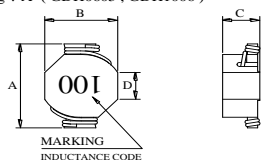


Fig : B (GDH1805)

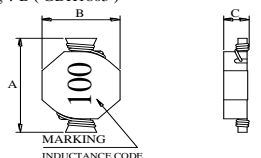


Fig : C (GDH1606(X), GDH1607(X), GDH1608(X))

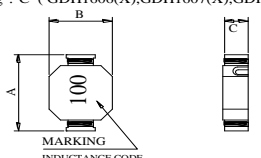
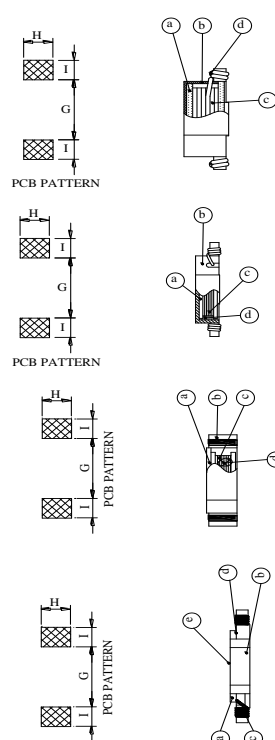
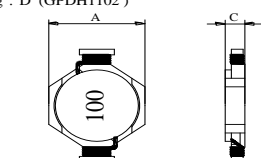


Fig : D (GPDH1102)



SERIES	A	B	C	D	E	F	G	H	I	Fig
GDH0605	8.89 ^{MAX.}	6.10 ^{MAX.}	5.00 ^{MAX.}	2.42 ^{REF.}		4.04 ^{MAX.}				A
GDH1006	13.97 ^{MAX.}	10.41 ^{MAX.}	6.00 ^{MAX.}	4.22 ^{REF.}	0.762 ^{MIN.}	6.73 ^{MAX.}	7.49 ^{REF.}	10.03 ^{REF.}	4.45 ^{REF.}	A
GDH1606(X)	7.00±0.3	5.20±0.3	2.20 ^{MAX.}	5.00±0.3	2.00±0.2	6.40±0.3	4.00 ^{REF.}	2.50 ^{REF.}	1.60 ^{REF.}	C
GDH1607(X)	7.00±0.3	5.20±0.3	2.50 ^{MAX.}	5.00±0.3	2.00±0.2	6.40±0.3	4.00 ^{REF.}	2.50 ^{REF.}	1.60 ^{REF.}	C
GDH1608(X)	7.00±0.3	5.20±0.3	3.10 ^{MAX.}	5.00±0.3	2.00±0.2	6.40±0.3	4.00 ^{REF.}	2.50 ^{REF.}	1.60 ^{REF.}	C
GDH1805	7.80±0.3	5.90±0.3	2.30 ^{MAX.}	5.70±0.3	2.40±0.2		4.50 ^{REF.}	3.00 ^{REF.}	1.80 ^{REF.}	B
GDH1102	11.00±0.3	15.00±0.3	2.60 ^{MAX.}				10.50 ^{REF.}	4.60 ^{REF.}	1.80 ^{REF.}	D

UNIT : m/m

★ MATERIALS :

- a · CORE : FERRITE DR CORE
- b · BASE : PHENOLIC
- c · WIRE : ENAMELLED COPPER WIRE
- d · ADHESIVE : EPOXY RESIN

★ GENERAL SPECIFICATION :

- a · TEMP. RISE 40°C TYP. AT Irms (GDH0605, 1006, 1102)
TEMP. RISE 40°C TYP. AT IDC (GDH1606(X), GDH1607(X), GDH1608(X), GDH1805)
- b · RATED CURRENT : $\Delta L/L0A=30\%$ TYP. AT Isat (GDH0605)
 $\Delta L/L0A=10\%$ TYP. AT Isat (GDH1006, 1102)
 $\Delta L/L0A=10\%$ MAX. AT IDC (GDH1606(X), GDH1607(X), GDH1608(X), GDH1805)
- c · OPERATING TEMP. : -40°C ---- +85°C
- d · RESISTANCE TO SOLDER HEAT : 260°C .10 SECS.
- e · INDUCTANCE MEASURING FREQUENCY :
GDH0605, GDH1006 SERIES : 0.25V/100K
GDH1606(X), GDH1607(X), GDH1608(X), GDH1805, GDH1102 SERIES : 0.1V/100K



GENERAL COMPONENTS INDUSTRY CORP.

旭誠工業股份有限公司

GDH SERIES II

ITEM	RDC (mΩ) MAX.							Isat (A)			Irms (A)			SRF (MHZ) TYP.				IDC (A)			
	GDH1606(X)	GDH1607(X)	GDH1608(X)	GDH0605	GDH1006	GDH1805	GDH1102	GDH0605	GDH1006	GDH1102	GDH0605	GDH1006	GDH1102	GDH1606(X)	GDH1607(X)	GDH1608(X)	GDH1805	GDH1606(X)	GDH1607(X)	GDH1608(X)	GDH1805
R47				9.7	4.9			7.70	11.40		6.00	10.60									
1R0	40	40	40	17.7	6.5	35		5.30	9.900		4.40	9.300		200	170	180	180	2.50	2.60	2.90	3.20
1R5	60	50	45	20.0	8.1	45		4.50	7.900		4.20	8.300		150	130	130	140	2.20	2.30	2.50	2.90
2R0							23.0			6.00			5.00								
2R2	80	65	55	36.3	10.7	65		3.50	6.100		3.10	7.200		130	110	100	110	1.80	1.90	2.00	2.10
3R3	110	95	65	42.8	12.8	95		3.00	5.100		2.90	6.500		100	90	80	90	1.60	1.60	1.70	1.80
3R9							40.0			4.50			3.50								
4R7	160	140	90	54.4	16.5	130	45.0	2.60	4.200	4.00	2.20	5.500	3.30	80	70	60	80	1.30	1.40	1.50	1.50
6R8	200	180	100	89.7	20.2	190	60.0	2.20	3.600	3.50	1.70	5.000	2.90	65	60	50	60	1.10	1.10	1.20	1.10
8R2							85.0			3.00			2.30								
100		300	160	110.7	26.7	260	100.0	1.90	3.300	2.70	1.50	4.300	2.00		50	40	50		1.00	1.10	1.00
120							120.0			2.50			1.70								
150			210	174.7	41.0		140.0	1.50	2.400	2.20	1.20	3.500	1.50			30				0.90	
180							180.0			2.00			1.30								
220			370	254.1	61.7		200.0	1.20	2.000	1.80	1.00	2.800	1.20			20				0.70	
270							230.0			1.70			1.10								
330			500	367.0	91.7			0.99	1.700		0.82	2.100				15				0.60	
470			710	474.0	138.8			0.87	1.400		0.72	1.700				13				0.50	
680			950	732.0	178.7			0.67	1.200		0.58	1.500				11				0.40	
820					223.5				1.030			1.340									
101				1109.0	270.7			0.53	0.950		0.47	1.200									
151				1610.0	410.0			0.46	0.770		0.40	1.000									
221				1960.0	671.7			0.38	0.637		0.36	0.773									
331				3100.0	878.3			0.31	0.510		0.28	0.676									
471					1310.0				0.427			0.553									
681					1970.0				0.355			0.452									
821					2240.0				0.334			0.423									
102					2960.0				0.300			0.369									

INDUCTANCE TOLERANCE: GDH0605 R47~331:M:±20%
 GDH1006 R47~102:M:±20%
 GDH1606(X) 1R0~6R8:M:±20%
 GDH1607(X) 1R0~100:M:±20%
 GDH1608(X) 1R0~680:M:±20%
 GDH1805 1R0~100:M:±20%
 GDH1102 2R0~270:M:±20%