

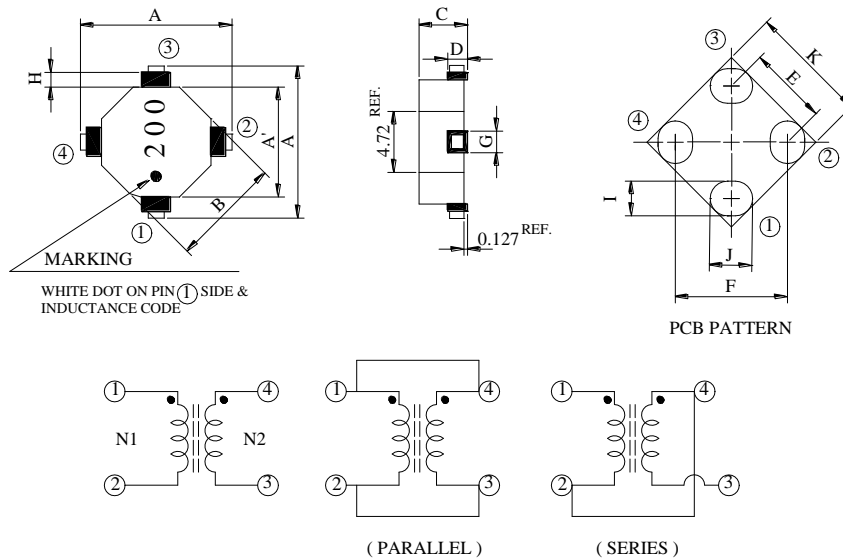


# GENERAL COMPONENTS INDUSTRY CORP.

## 旭誠工業股份有限公司

### GTB1106 SERIES & STB1306 SERIES

#### ★ CONFIGURATION & DIMENSIONS :

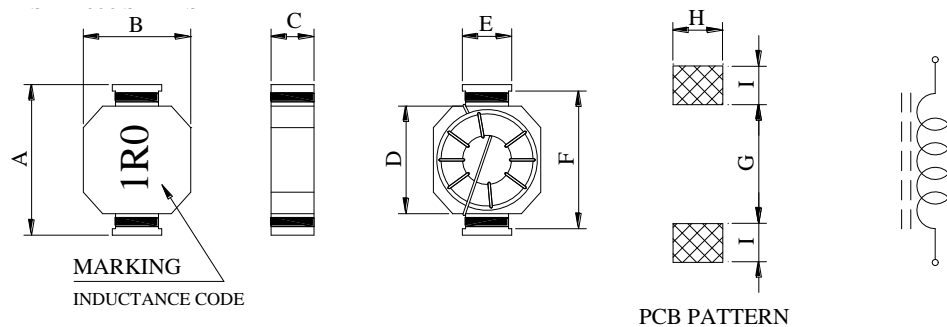


"●" : POLARITY

SERIES	A	A'	B	C	D	E	F	G	H	I	J	K
GTB1106	11.43 <sup>TYP</sup>	8.89 <sup>TYP</sup>	8.89 <sup>TYP</sup>	5.97 <sup>MAX</sup>		7.04 <sup>TYP</sup>	9.96 <sup>TYP</sup>		0.76 <sup>MIN</sup>	3.05 <sup>TYP</sup>	3.69 <sup>TYP</sup>	10.70 <sup>TYP</sup>
GTB1306	13.97 <sup>TYP</sup>	11.43 <sup>TYP</sup>	11.43 <sup>TYP</sup>	6.35 <sup>MAX</sup>	3.05	8.84 <sup>TYP</sup>	12.50 <sup>TYP</sup>	3.55	0.76 <sup>MIN</sup>	3.05 <sup>TYP</sup>	4.06 <sup>TYP</sup>	12.50 <sup>TYP</sup>

UNIT : m/m

### GTB1606 SERIES



SERIES	A	B	C	D	E	F	G	H	I
GTB1606	7.0±0.3	5.2±0.3	2.0 MAX.	5.0±0.3	2.0±0.2	6.4±0.3	4.0 <sup>REF.</sup>	2.5 <sup>REF.</sup>	1.6 <sup>REF.</sup>

UNIT : m/m

#### ★ GENERAL SPECIFICATION :

- a . TEMP. RISE : 40°C TYP. AT Irms (GTB1606)
- b . RATED CURRENT :  $\Delta L/L0A = 30\%$  TYP. AT Isat (GTB1606)
- c . STORAGE TEMP : -40°C ---- +125°C
- d . OPERATING TEM. : -40°C ---- +85°C (GTB1606)
- e . RESISTANCE TO SOLDER HEAT : 260°C . 10 SECS.



# GENERAL COMPONENTS INDUSTRY CORP.

## 旭誠工業股份有限公司

### GTB1106 SERIES

ITEM	PARALLEL					SERIES				
	L (uH) ±20%	L <sub>IDC</sub> (uH) MIN.	TEST FREQ. (HZ)	RDC (Ω) MAX.	IDC (A)	L (uH) ±20%	L <sub>IDC</sub> (uH) MIN.	TEST FREQ. (HZ)	RDC (Ω) MAX.	IDC (A)
R54	0.54	0.42	0.25V/100K	0.0060	5.90	2.18	1.69	0.25V/100K	0.024	2.95
R85	0.85	0.64	0.25V/100K	0.0070	5.40	3.40	2.55	0.25V/100K	0.029	2.70
1R2	1.22	0.89	0.25V/100K	0.0080	5.00	4.90	3.57	0.25V/100K	0.033	2.50
2R2	2.18	1.56	0.25V/100K	0.0140	3.90	8.70	6.26	0.25V/100K	0.055	1.95
4R9	4.90	3.57	0.25V/100K	0.0320	2.50	19.58	14.26	0.25V/100K	0.128	1.25
7R6	7.65	5.31	0.25V/100K	0.0400	2.30	30.60	21.23	0.25V/100K	0.158	1.15
100	9.83	6.73	0.25V/100K	0.0450	2.10	39.30	26.92	0.25V/100K	0.179	1.05
150	14.99	10.51	0.25V/100K	0.0850	1.60	59.98	42.02	0.25V/100K	0.339	0.80
200	19.58	13.37	0.25V/100K	0.0970	1.50	78.34	53.48	0.25V/100K	0.387	0.75
250	24.79	16.60	0.25V/100K	0.1090	1.40	99.14	66.38	0.25V/100K	0.436	0.70
330	32.67	21.29	0.25V/100K	0.1260	1.30	130.70	85.17	0.25V/100K	0.503	0.65
500	49.10	35.31	0.25V/100K	0.3050	0.82	196.38	141.24	0.25V/100K	1.221	0.41
680	68.85	47.93	0.25V/100K	0.3620	0.76	275.40	191.71	0.25V/100K	1.445	0.38
101	99.14	69.56	0.25V/100K	0.5410	0.62	396.58	278.22	0.25V/100K	2.162	0.31

### GTB1306 SERIES

ITEM	PARALLEL					SERIES				
	L (uH) ±20%	L <sub>IDC</sub> (uH) MIN.	TEST FREQ. (HZ)	RDC (Ω) MAX.	IDC (A)	L (uH) ±20%	L <sub>IDC</sub> (uH) MIN.	TEST FREQ. (HZ)	RDC (Ω) MAX.	IDC (A)
R49	0.49	0.37	0.25V/100K	0.0093	7.90	1.95	1.49	0.25V/100K	0.019	3.95
R76	0.76	0.56	0.25V/100K	0.0112	7.20	3.05	2.24	0.25V/100K	0.023	3.60
1R1	1.10	0.81	0.25V/100K	0.0166	5.90	4.39	3.24	0.25V/100K	0.033	2.95
1R9	1.95	1.42	0.25V/100K	0.0274	4.60	7.81	5.69	0.25V/100K	0.055	2.30
5R1	5.15	3.56	0.25V/100K	0.0534	3.30	20.62	14.23	0.25V/100K	0.107	1.65
7R8	7.81	5.15	0.25V/100K	0.0653	3.00	31.23	20.61	0.25V/100K	0.131	1.50
9R8	9.88	6.70	0.25V/100K	0.0933	2.50	39.53	26.79	0.25V/100K	0.187	1.25
140	14.76	9.52	0.25V/100K	0.1139	2.30	59.05	38.09	0.25V/100K	0.228	1.15
200	20.62	13.44	0.25V/100K	0.1684	1.90	82.47	53.76	0.25V/100K	0.337	0.95
250	25.65	17.17	0.25V/100K	0.2306	1.60	102.60	68.68	0.25V/100K	0.461	0.80
330	33.21	22.93	0.25V/100K	0.3312	1.30	132.86	91.72	0.25V/100K	0.662	0.65
480	48.80	32.21	0.25V/100K	0.4025	1.20	195.20	128.83	0.25V/100K	0.805	0.60
670	67.37	43.04	0.25V/100K	0.4760	1.10	269.50	172.16	0.25V/100K	0.952	0.55
990	99.09	69.54	0.25V/100K	1.1300	0.72	396.38	278.15	0.25V/100K	2.259	0.36

Turns Ratio=1 : 1

HI POT TEST (N1=N2) : 300Vdc/1mA/1Second.

### GTB1606 SERIES

ITEM	RDC(mΩ) MAX.	Isat (A)	Irms (A)	SRF(MHZ) TYP.
1R0	50	2.6	2.0	160
1R5	60	1.9	1.8	150
2R2	70	1.8	1.7	140
3R3	80	1.5	1.5	100
4R7	100	1.3	1.4	90
6R8	140	1.0	1.1	80
100	170	0.8	1.0	70
150	280	0.7	0.8	60
220	340	0.6	0.7	40

INDUCTANCE TOLERANCE: STB1606 1R0~220:M:±20%